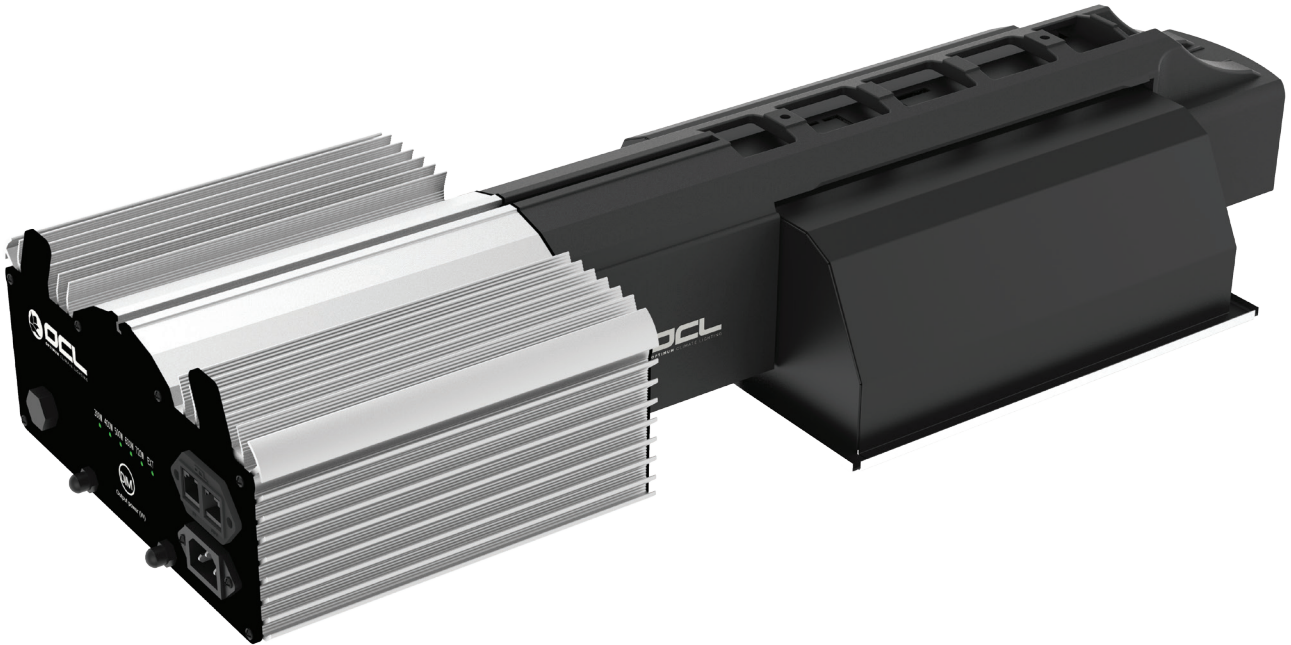


## OC600W (208-240V) DATASHEET



### TECHNICAL SPECIFICATIONS - OCL 600W

(208-240V) BALLAST

**Input Voltage:** 190-265 Volt AC

**Rated input voltage:** 240 Volt AC  $\pm 10\%$

**Frequency:** 50-60 Hz

**Input current at 100%:** 2.70 Amps

**Input current at 120%:** 3.19 Amps

**Input power at 100%:** 645 Watt

**Input power at 120%:** 762 Watt

**Inrush current:** 30 Amps

**Power factor:** 0.98

**Product weight:** 6.0KG

**Package dimensions (LxWxH):** 78\*31\*19cm

**Temperature ambient:** 0-40(32-104 °F)

**Relative humidity:** <70%

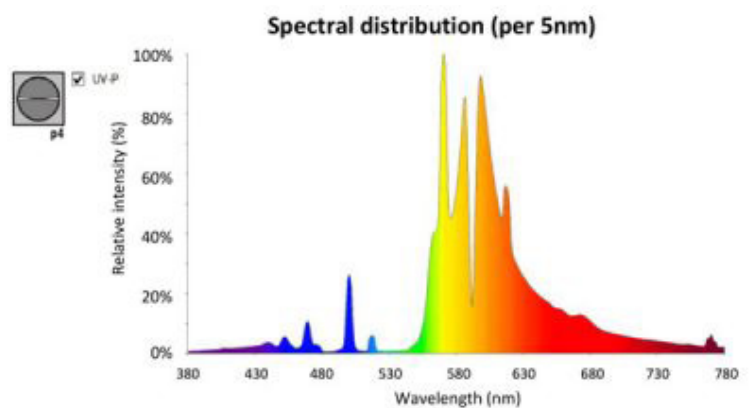
**Total Harmonic Distortion:** <10%

**Dimming:** 300/400/500/600/720W

**External dim connector:** RJ45

**BTU at 100%:** 1810

**Warranty:** 3 Years



# BTU TEST RESULT

<b>EUT name:</b>	OCL600W-HPS	<b>Model:</b>	OCL600W X-SERIE	<b>Condition:</b>	25.0°C.2m <sup>3</sup>
<b>Test require:</b>	Test in 2m <sup>3</sup> of space test temperature from ambient temperature to the temperature difference between the highest temperatures.				
<b>Test data:</b>	Ambient: 25.141°C, max.:52.847°C, Temperature gradient:27.706K				
<b>Note:</b>	Need to according to the area corresponding to the number of lamps and lanterns control temperature to rise				
<b>Heat:</b>	1909187.22J/h = 1810 BTU				

**Remark:**  $Q=c \cdot m \cdot \Delta t$ .

Temperature to rise

